

## B052

### Digital water bath

This bath is fully double walled stainless steel made with wool insulation. The specimens are held by a shelf spaced from the bottom.

Complete with digital thermostat and electric stirrer "for continuous water recirculation", ensuring a constant and uniform temperature of  $60 \pm 1^\circ\text{C}$  or  $37,8 \pm 1^\circ\text{C}$  as prescribed by the Standards.

The bath can hold up to 20 Marshall specimens

Capacity: 60 litres

Temperature range: from ambient to  $95^\circ\text{C}$

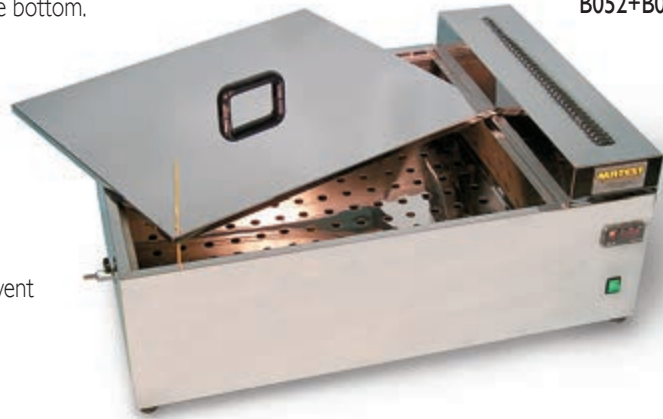
The bath is equipped of a dual safety thermostat to prevent accidental over-heatings.

Inside dimensions: 700x550x165 mm

Outside dimensions: 900x640x340 mm

Power supply: 230 V 1 ph 50/60 Hz 1500 W

Weight: 28 kg



B052+ B052-10



B052-01

## B052-01

### Digital water bath

Identical to mod. B052 but:

Inside dimensions: 430x420x160 mm

Outside dimensions: 620x500x330 mm

The bath can hold up to 9 Marshall specimens

Capacity: 30 litres

Power Supply: 230 V 1 ph 50/60 Hz 1200 W

Weight: 15 kg



B052-02

## B052-02

### Digital water bath with cooling device

Similar to mod. B052 but equipped with cooling unit housed under the bath for controlling water temperatures where the ambient temperature is quite higher.

Temperature range from:  $+3$  to  $+95^\circ\text{C}$ , accuracy:  $\pm 1^\circ\text{C}$ .

The bath can hold up to 12 Marshall specimens

Capacity: 45 litres

Inside dimensions: 635x360x205 mm

Outside dimensions: 800x430x1000 mm

Power supply: 230 V 1 ph 50/60 Hz 1650 W

Weight: 60 kg

ACCESSORY FOR MOD. B051 ÷ B052-02

**B052-10** Alcool control thermometer  $0-100^\circ\text{C}$  subd.  $1^\circ\text{C}$

