

**B070N1**  
**SOFTMATIC**

**Automatic Digital Ring and Ball apparatus "TOUCH-SCREEN"**

STANDARDS: EN 1427 / ASTM D36 / AASHTO T53 / NF T66-008;  
comparable to: BS 2000 / DIN 52011 / UNE 7111 / UNI 4161 / CNR N.35

This "high technology" digital microprocessor tester, designed and manufactured by Matest, automatically determines the softening point of asphalts and pitches.

Two laser sensors detect the balls fall determining the softening point.  
The bath temperature is measured by an electronic system maintaining the gradient (5°C./min) as specified by the Standards.

**Real time visualization of the Temperature(°C)-Time(sec) graph along the entire test.**

A magnetic stirrer with electronic speed adjustment from 0 to 160 rpm also ensures an uniform temperature in the vessel during the test execution.

The touch-screen graphical interface allows an easy set up of the parameters and the immediate execution of the test.  
High resolution color display, 1/4 VGA, offers all the functions of a PC for the management and analysis of data, test results, and graphs.

Two test parameters can be selected by the microprocessor menu:  
- test on boiled distilled water for softening point from 30 to 80°C.  
- test on glycerol for softening point from 80 up to 150°C.

Language selection: English, French, Spanish, German, Italian, Polish, Russian, Greek, Portuguese, Dutch.  
Functions of: clock calendar; test number; user/customer name, general notes, start/end of the test.  
Real time visualisation of the bath temperature, test progress, rpm of the stirrer.

**Unlimited memory, with possibility to save data onto an external memory (USB pendrive, SD card) and then edit them through an Excel spreadsheet.**

The tester is basically composed by:  
- Ceramic-glass heating plate with automatic cut off at the end of the test cycle.  
- Motherboard with microprocessor; which controls: heater/stirrer; temperature probe, laser sensors, pre-heating phase of the plate, and memorizes all the test parameters.  
- Steel balls centering device.

Power supply: 230V 1ph 50/60Hz 700W  
Dimensions: 500x350xh550 mm  
Weight: 20 kg approx.

ACCESSORY:

**B070-11**  
RODS WITH SPHERICAL ENDS (set of 2 pieces)  
for checking and calibration of the instrument.

SPARE PARTS for B070N:

**B072-03** Steel ball 9,5 mm diameter      **B070-16** Brass centering guide, chromed  
**B070-15** Brass tapered ring, chromed      **B070-17** Pyrex beaker

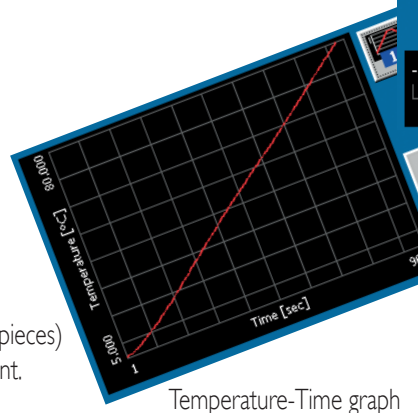


section B

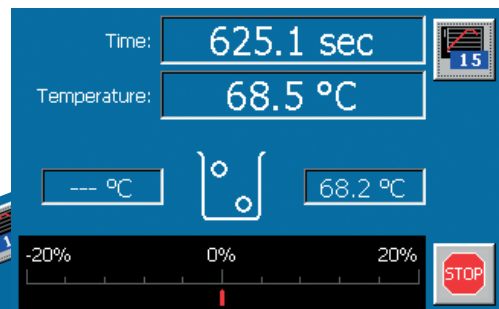


135

- Main Functions:
- Touch-Screen display like a normal PC
- Unlimited memory
- Multilanguage selection
- Microprocessor friendly-driven menu to control all the test phases
- Top quality components: laser sensors, electronic magnetic stirrer, ceramic-glass heating plate
- Fully automatic



Temperature-Time graph



Test execution



MATEST