

C430

Automatic concrete water permeability apparatus at four cells

This fully automatic apparatus is designed to perform water permeability tests on cubic concrete specimens max. 150 mm side and cylinder specimens max. 160 mm diameter. The specimens are submitted to hydrostatic stress for a pre-set period. The water permeated through the test specimen is directly collected and measured into a graduated cylinder.

It is therefore possible to determine the permeability coefficient in cm/sec. (Darcy coefficient) by the following formula:

Supplied complete with four cells, four graduated cylinders, epoxy resin and accessories. The "sealing devices are not included" in the standard package and must be ordered separately.

Power supply: 230V 1 ph 50 Hz

Dimensions: 2500x500x1300 mm

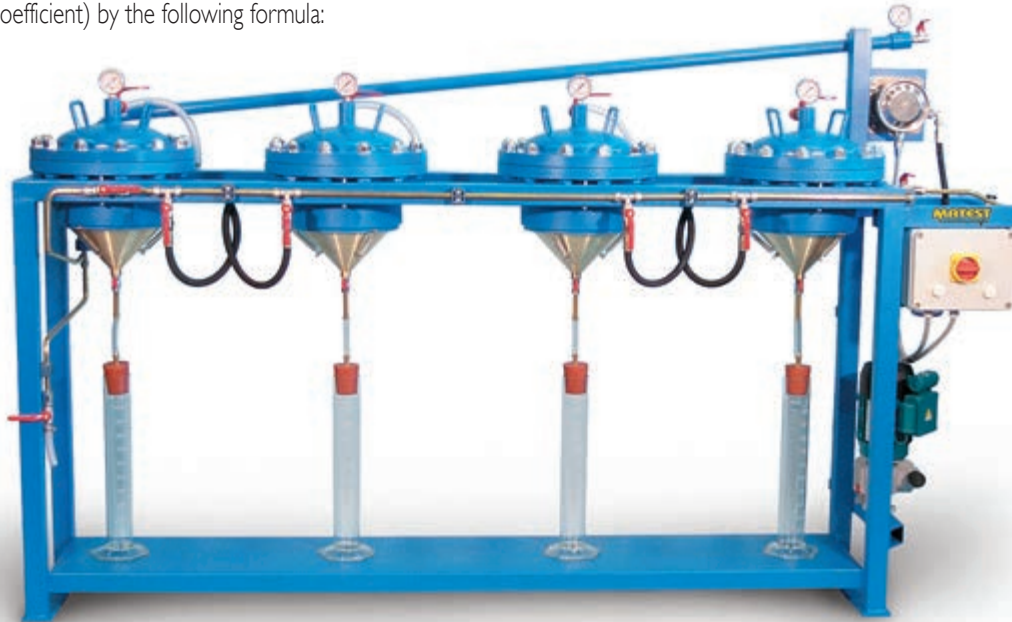
Weight: 240 kg

section C



304

C430



$$K = \frac{cc \times h}{A \times t \times P}$$

where: cc = permeated water in cm³
 h = height of the specimen (cm)
 A = surface area of the specimen (sq. cm.)
 t = time to permeate (sec.)
 P = hydrostatic pressure in cm. of water column

The equipment consists of a strong metallic frame holding four cells which are hot-galvanized for anti-corrosion protection.

Each cell includes a pressure control manometer.

A re-chargeable compensation plenum chamber is included as part of the test.

The pressure is adjustable from 0 to 30 bar and it is supplied by an automatic pump of variable supply, to achieve the most suitable installation for the specimen under test.

Water feed is direct from water inlet.

Seal pressure obtained through special and practical seal devices which maintain and simplify the use of the machine.

It is possible to use one or more cells together, and specimens also of different size (cubes/cylinders).

The specimen's sealing system is achieved through a practical and speedy, user-friendly device.

"NEEDED" ACCESSORIES:

Sealing device, complete with rubber latex packing which is between the two hot-galvanized steel collars. Complete with bolts.

MODELS:

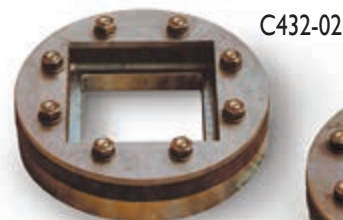
C432-01 Sealing device for cubes 100 mm side

C432-02 Sealing device for cubes 150 mm side

C432-04 Sealing device for cylinders dia. 100 mm

C432-05 Sealing device for cylinders dia. 150 mm

C432-06 Sealing device for cylinders dia. 160 mm



C432-02



C432-05

SPARE:

C433

EPOXY RESIN, to isolate the lateral surfaces of the concrete specimen. Can of 5 kg