

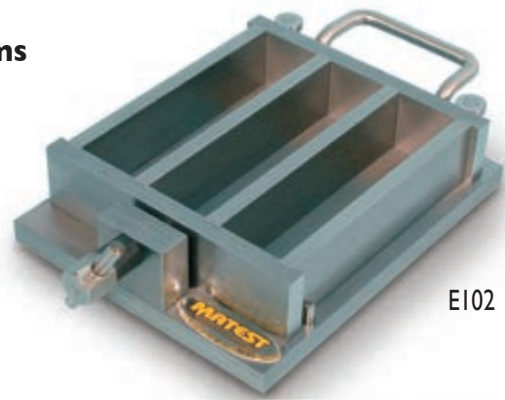


**E102**

**Three gang mould for 40,1 x 40 x 160 mm prisms**

STANDARDS: EN 196-1 / EN ISO 679

Manufactured from steel with "hardness of inside walls over HV 200", it meets the dimensional tolerances to EN 196/1 Standard. All surfaces are grinded and all parts are marked with an identification number for a correct assembling. A part-number is engraved on each mould and a Certificate of Conformity is supplied along with. Weight: 8560 g.



E102

**E103**

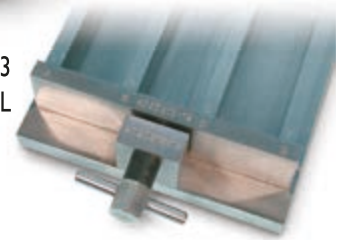
**Three gang verified mould for 40,1 x 40 x 160 mm prisms**

STANDARDS: EN 196-1 / EN ISO 679

Identical in shape to mod. E102, but manufactured from heavy duty steel "with hardness of inside walls over HV 500" (EN196/1 Specifications recommend hardness HV 400). This high hardness value keeps the mould within the tolerances requested by Spec. for many tests, granting very long utilisation life.

All parts are marked with an identification number for a correct assembling. Each mould is individually verified in the dimensional tolerances, hardness, squareness, flatness and roughness with instruments periodically certified by Namas Centre or equivalent. A part-number is engraved on each mould, and a Certificate of Conformity is supplied along with. Weight: 8560 g.

E103  
DETAIL



**E104**

**Three gang verified mould for prisms 40,1 x 40 x 160 mm "Italcementi model"**

STANDARD: EN 196-1

Similar to mod. E103, but with:

- Large base mm 240 x 245
- Weight: 11,850 kg

Manufactured expressly for "Italcementi Group" cement factory.

**E105**

**Three gang mould for prisms 40x40x160 mm**

STANDARDS: NF P15-413 / ASTM C348 / DIN 1164, 1060

Made from steel, hardness 55 HRB, it conforms to the above mentioned Specifications. Weight: 8 kg

ACCESSORIES:

**E106** FEED HOPPER, used to fill the mould E102, E103, E105 when it is mounted on the Jolting machine E130, E131 Made from cast aluminium. Weight: 1 kg.

**E102-02** LARGE AND SMALL SCRAPER to EN 196-1-2005

**S200-11** STRAIGHT EDGE 300 mm. long

**E102-03** GLASS PLATE 220x190x6 mm to cover the mould

**E102-11**

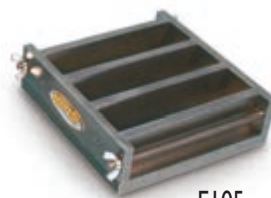
**Six gang mould for 40,1 x 40 x 80 mm**

DETERMINATION OF WATER ABSORPTION on grouts for floor or wall installation of ceramic tiles.

STANDARD: EN 12808-5

Identical to mod. E102, but equipped with three stainless steel partitions, positioned in the middle of the gangs, to obtain six gangs having dimensions 40,1 x 40 x 80 mm approx.

Weight: 8600 g



E105



E102-11

**E112**

**Three gang mould for 70,7x70,7x282,8 mm**

STANDARD: NF P18-401

Made from steel. Weight: 17 kg

**E111**

**Briquette mould**

STANDARDS: ASTM C190, C307 / AASHTO T132

Accurately machined it conforms to the above Specifications and is easily collapsible. Complete with base.

Weight: 3 kg



E112

**E110**

**50 mm three gang cube mould**

Made from steel, hardness 55 HRB, it can be also used for soil and other materials. Weight: 7 kg



E111

E110



E102-03

E106

S200-11

E102-02