

E027

Air content meter 1 litre capacity

STANDARD: EN 459-2 / EN 1015-7

Designed to determine the air content in cement mortar, cement paste and lime mortar. Made from cast aluminium, the test pot one litre capacity and the upper part are air-tight sealed by means of two quick action spring clamps. The whole is connected to a dial gauge directly indicating the air entrainment in percentage, with range 0 - 50%. A built-in operated air pump is also included.

The push-buttons TEST and CORRECTION are arranged to perform the test in a simple and quick system.

Dimensions: dia. 200 by 320 mm

Weight: 3,5 kg

E027-01

Air content meter 0,75 litre capacity

STANDARD: EN 413-2

Identical to mod. E027, but with vessel having 0,75 litre capacity, conforming to EN 413-2 Specification.

E028

Air content meter 1 litre, electric

STANDARD: EN 459-2

Same as mod. E027, but with incorporated an electric mini-compressor giving air pressure and keeping it constant all along the test. Power supply: 230V 1ph 50/60Hz

E028-02

Air content meter 0,75 litre, electric

STANDARD: EN 413-2

Identical to mod. E028, but with vessel having 0,75 litre capacity, conforming to EN 413-2 Specification.

ACCESSORY:

E028-01 Filling Hopper (Ring) for the meters E027, E027-01, E028, E028-02



E027

E028

E034

Apparatus for lime testing reactivity

STANDARDS: EN 459-2 / NF P98-102

This apparatus is used for determining the reactivity on slaking of ground quicklime.

The equipment consists of a Dewar vessel 1000 ml capacity complete with cover, electric stirrer 300 rpm. complete with stirring paddle (propeller), base with stand, digital thermometer range -50 +200°C. subd. 0,1°C., accessories.

Power Supply: 230V 1ph 50Hz

Dimensions: 400 x 250 x 750 mm

Weight: 10 kg approx.

ACCESSORY:

E034-05

Weighting and filling container

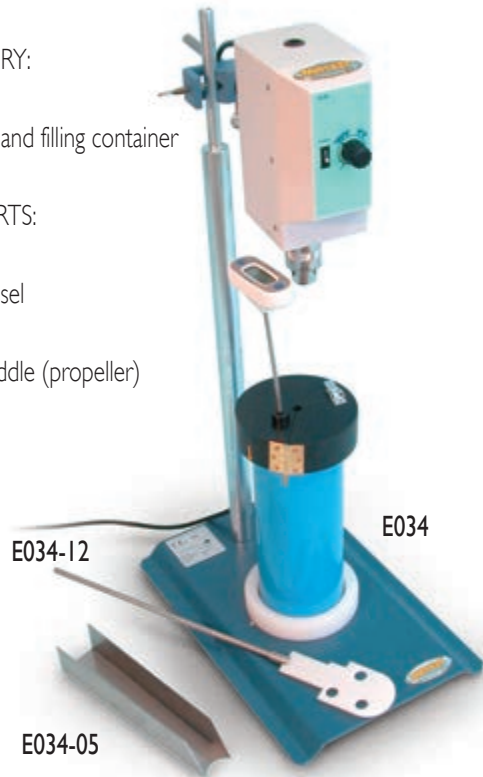
SPARE PARTS:

E034-11

Dewar vessel

E034-12

Stirring paddle (propeller)



E034-12

E034

E034-05

E035

Slaking vessel

BUILDING LIME – YIELD OF LIME

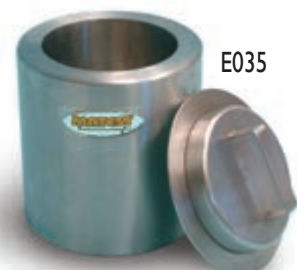
STANDARD: EN 459-2

This insulated vessel is used to determine the yield of lime by leaving the lime sample to slake into.

Stainless steel made, double walled insulated with glass fibres, the cylinder has inside dimensions dia. 113 by 140 mm deep.

Supplied complete with cover.

Weight: 4 kg approx.



E035