

## E092N KIT

### MIXMATIC "HIGH PERFORMANCE TOUCH SCREEN"

### AUTOMATIC PROGRAMMABLE COMPUTERIZED MORTAR MIXER

STANDARDS: EN 196-1, EN 196-3:2005, EN 413-2, EN 459-2, EN 480 / NF P15-314 / EN ISO 679 / DIN 1164-5, DIN 1164-7  
ASTM C305 / AASHTO T162

section E

NEW



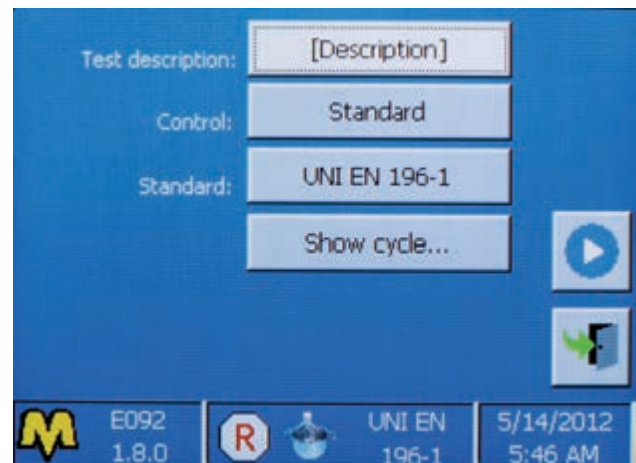
E092N KIT

#### Design :

- Very sturdy and durable construction for intensive laboratory use.
- Planetary transmission for silent and low maintenance operation.
- Automatic sand dispenser having dimensions and geometry to grant the correct sand insertion, without residual and disaggregation between fine and coarse portions.
- Dispenser for additives (see accessory mod. E092-05).
- Dispenser for automatic water addition (see accessory mod. E092-06).
- Transparent CE-conform protection of the mixing area, to allow the mixture looking during the test.
- Digitally controlled rotation speed..
- Complete with stainless steel polished beater and mixing bowl.
- Easy and fast bowl insertion and removal.
- Safety system of bowl presence and correct position to avoid dangerous working, with double sensor of removed bowl with load/unload sequential discrimination.
- Emergency stop button.

#### Firmware:

- Different automatic programmable mixing cycles conforming to the a.m. Standards.
  - The operator can also program up to 30 automatic personalized mixing cycles, easy to set through Touch Screen.
  - Synchronised acoustic signals with cycle steps.
  - Electronic control unit with touch screen colour display, that runs like a standard PC based on Windows operating system for the management and analysis of the data, test results, graphs. The touch-screen icon interface allows an easy set up of the parameters and immediate execution of the test. Direct connection to Intranet (connection to a LAN network) and Internet to establish a remote communication and receive an immediate diagnostic analysis of the potential problem from Matest technicians, or for updates of the software.
- Hardware technical details: see pag. 24  
Unlimited memory storage with: 2 USB ports, 1 SD card slot, RS232/485 serial port.
- Rotational motor feeded through inverter to grant the max. precision of the rotational speed, adjustable by the operator on the display.
  - Possibility of manual mixing cycle.
  - Possibility to select different languages.



Selection of the Standard

- Detailed indication of all the times (elapsed from the test start, residual to end test, elapsed from and test and bowl removal), state of cycle development with analogue bar; speed, active phase (sand, water), test state (correct execution or test interruption with lost results), type of current test.

Power supply: 230V 50/60 Hz 1 ph  
Dimensions: 530 x 620 xh 780 mm  
Weight : 85 kg

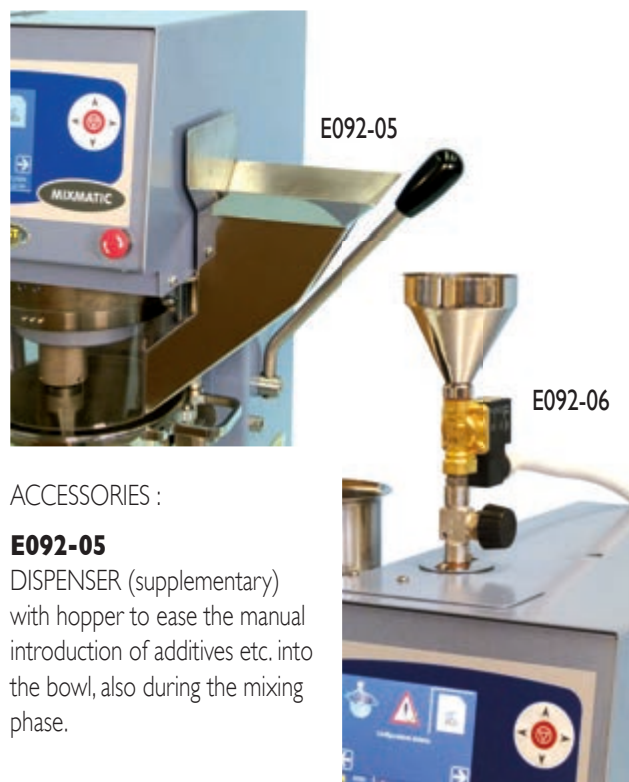
**E092N KIT MIXMATIC** ...follows...



Test execution



Personalized cycle composition



ACCESSORIES :

**E092-05**  
 DISPENSER (supplementary) with hopper to ease the manual introduction of additives etc. into the bowl, also during the mixing phase.

**E092-06**  
 DISPENSER (supplementary) with hopper for the automatic introduction (managed by the software) of water into the bowl, also during the mixing phase.

**E097-01N** Reference sand, size 0,08÷2 mm to EN 196-1 Standard.  
 Bag of 1350 g. Pack of 16 bags for total of 21,6 kg.



Main menù

SPARE PARTS:

**E092-10** BOWL, stainless steel 4,75 litre capacity.

**E095-04** BEATER, polished, stainless steel.



USE EXAMPLE



... follows...

