

**E130**  
**Jolting apparatus**

STANDARDS: EN 196-1 / EN ISO 679 / NF P15-412 / BS 3892 / UNE 80101

Used to compact cement mortar prisms 40x40x160 mm in the three gang mould, as requested by the above Specifications.

The apparatus, consists of a table holding the mould, seated on a rotating cam driven at 60 revolutions per minute. The jolting group is connected to the table by bayonet joints for quick checking of the weights.

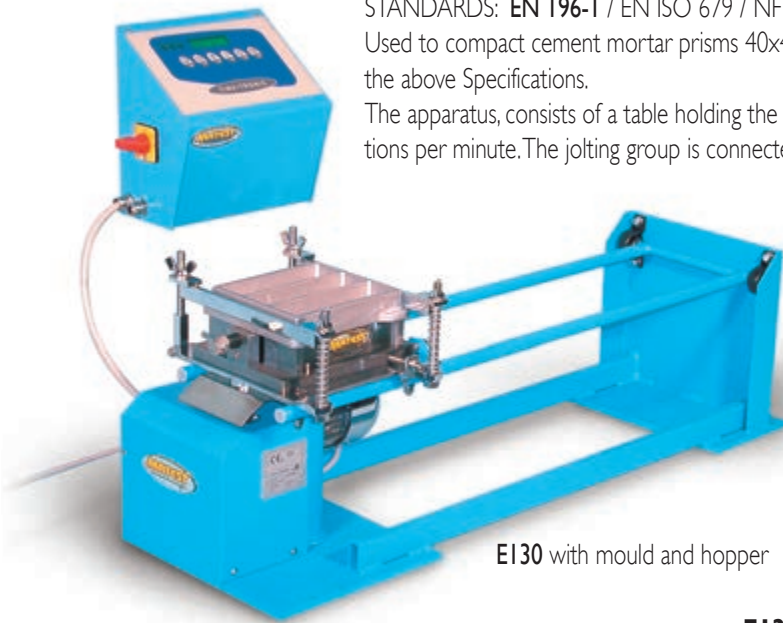
The drop height (15,0 mm) is adjustable to keep it correct also after intensive uses. The apparatus is supplied with separate control panel including main switch, automatic digital drop counter, start/stop push button.

The apparatus accepts moulds Matest made, and also of other manufacturers.

Power supply: 230 V Iph 50 Hz 500 W

Dimensions: 1000x380x420 mm

Weight: 65 kg



E130 with mould and hopper

**E130-II**

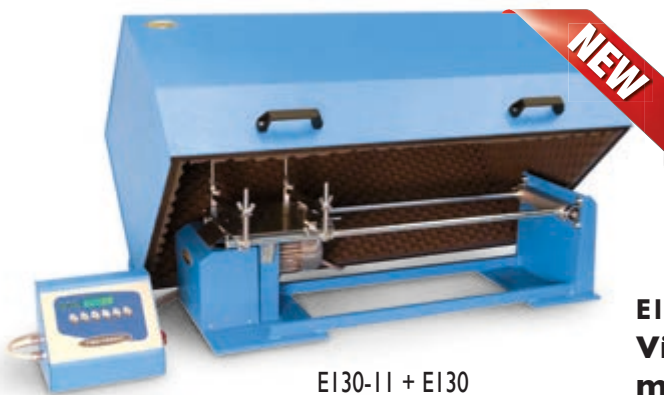
**Cabinet**, manufactured from sheet steel, internally lined with sound-proofing material for noise reduction, to be used with the Jolting apparatus E130, E131.

Front opening with rear hinges and jacks to facilitate the lifting.

Concrete base minimum 1350 x 670 mm is requested.

Dimensions: 1300 x 510 xh 700 mm

Weight: 25 kg



E130-II + E130

**E131N**  
**Jolting apparatus "high performance"**

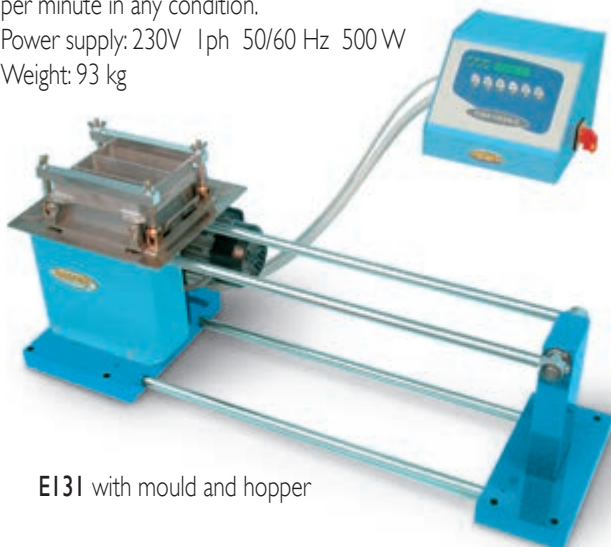
STANDARDS: EN 196-1 / EN ISO 679

Similar to model E130, but manufactured with oversized components, treatments and extremely accurate couplings for intensive use in heavy conditions.

Motor feeded by an inverter to grant the keeping of 60 revolutions per minute in any condition.

Power supply: 230V Iph 50/60 Hz 500 W

Weight: 93 kg



E131 with mould and hopper

**E132**

**Vibrating machine for 70,7 mm cube moulds**

STANDARD: BS 4550

The mould is mounted on a vibration platform with eccentric mechanism. The machine is supplied complete with separate control panel with timer; but "without cube moulds" to be ordered separately.

Power supply: 230V Iph 50 Hz 250 W

Weight: 100 kg



E132 with mould

**E133**

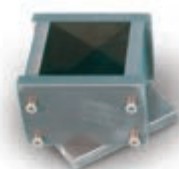
**Cube mould 70,7 mm**

STANDARD: BS 4550

Made from steel with dimensions as specified by above Standard.

Complete with base plate (three moulds required for each test).

Weight: 3 kg



E133

